



Prof. H. Martin Edge



Date of Birth: 30/6/1957
Marital Status: Married (05/04/2009)

Contact Details

Address: Edge Environment, 4 Craiglockhart Loan, Edinburgh EH14 1HU
E mail: martin@edge.me.uk
Telephone: (0044)131 443 1817
Mobile: 07979 286884
<http://www.edge.me.uk>

Current Post

Independent Consultant

Qualifications PhD

MSc (Rural and Regional Resources Planning)
BSc Honours (2.1) (Quantity Surveying)

Employment History

6/2003 to 10/2008: **Professor, Director of the 'Environments for People Centre' and Head of Research**, Scott Sutherland School, RGU, Aberdeen. In this role I took overall responsibility for the University's 2008 RAE submission to UoA 30, Architecture and Built Environment, of which I was the principal author. The Exercise classed 10% of this research as 'world leading' with a further 60% 'internationally excellent' or 'internationally recognised'. This represented a major step-change from the '3b' achieved in the 2001 exercise

3/2001 to 6/2003: **Reader and Head of Architecture and Built Environment Research**, Scott Sutherland School, RGU, Aberdeen

9/1996 to 3/2001: Res. Fellow/**Senior Research Fellow**, Faculty of Design, RGU

9/1996 to 7/1997: Design Tutor, Dept. of Architecture, University of Strathclyde

4/1993 to 9/1995: **Senior Lecturer**, School of Surveying, RGU, Aberdeen

9/1989 to 4/1993: **Lecturer**, School of Surveying, RGU, Aberdeen

9/1991 to 9/1995: Part-Time **Lecturer**, Dept. of Land Economy, Uni. of Aberdeen

Professional Recognition

- Assessed in April 2007 in a 'mock RAE' by an independent assessor who was a member of the Built Environment RAE Panel in 1996 and 2001, as having 2008 RAE outputs as follows: 4* 3* 3* 2*.
- Elected to **EPSRC College** (2002 and 2006). RGU had only three members in the 2002 College and 4 members in the 2006 College. Assessor on a number of Panels including the 'National Sustainable Urban Environments' Initiative and the 'Adaptation and resistance to a Changing Climate' Initiative.
- Invited Chair and organiser of **edra32**, Edinburgh, July 2001, the 32nd annual conference of the Environmental Design Research Association (<http://www.rgu.ac.uk/sss/research/page.cfm?pge=33171>). This event, held outside the Americas for the first time ever, was the largest environment-behaviour event in the world in 2001.
- Editor** of **proceedings** with a panel of over 70 international referees.
- Leader of **SHEFC SRDG** proposal for the 'Centre for Sustainable Home Environments'. Selected as one of three RGU proposals. Developed collaboration with Heriot-Watt University School of Built Environment.
- Invited leader of RGU team in User-Oriented Technology for Design of the Built Environment (**USO-Built**), a Graduate School of thirty institutions under the CLUSTER



umbrella. The other UK Universities represented are Durham, Cambridge and Strathclyde.

- One of fifteen Invited Panel Member of **EPSRC/Capacity Global** Project 'Sustainable Development and Quality of Life'
- Member of SHEFC funded Scottish Universities' Network for Sustainability (**SUNS**) Theme 1: Construction & the Built Environment
- Member of **Scottish Executive** Architecture Policy Unit and 'The Lighthouse' Panel on Sustainable Architecture
- Leader of **FP6 proposal** '4iSTOP', consisting of seven UK and 13 other European universities and institutions in the field of assistive technology and housing.
- Awarded a **RICS award** 1999 for involvement in the design of rural housing.
- Published nearly 100 papers of which over 50 are within the post-RAE 2001 assessment period.
- A number of **invited** and **Keynote papers** at conferences
- International Technical/Advisory Committee of CONTEC-2003 International Conference on Construction Technology. Malaysia October 2003

- R**esponsibilities
- In my last post I was Head of Research, Scott Sutherland School of Architecture and Built Environment.
 - Acquired, as Principal Investigator/Manager/Researcher an international research portfolio of projects worth over £1 million.
 - Supervision of project teams of Research Fellows, Assistants and other academics, including inter-university collaborations.
 - Responsible for the development of the University's research and research strategy in Architecture and Built Environment, including ongoing RAE strategy.
 - Responsible for external and intra-university liaison on research, for example leadership of built environment aspects of the ARC Centre 'Energy@Aberdeen'.

Research Portfolio

From 1998 to 2008 I developed the portfolio of Architecture and Built Environment research in RGU from practice-based projects to more mainstream European and Research Council funding. The principal projects which I have been instrumental in acquiring funding for and running are:

- Acquisition of £150,000 funding for establishment of the 'Environments for People Research Centre' in July 2005. This is an umbrella organisation pulling together the research in Architecture and Built Environment in RGU. I have the post of Director of this Centre (<http://www.rgu.ac.uk/sss/research/page.cfm?pge=2538>).
- Manager, Project Co-Ordinator and Principal Investigator of 'CUSTODIAN', a £440,000 European Commission **Fourth Framework** Project funded under the 'TIDE' Programme, on assistive technology in the home. The Project has led to a variety of demonstration 'smart home' installations throughout Scotland, subsequent consultancy activities and a National and international network of contacts in public sector care organisations, as well as a full software suite for smart home design (<http://www.rgu.ac.uk/sss/research/page.cfm?pge=33336>).
- Principal Investigator on **Link MCNS** Project 'Overcoming Client and Market Resistance to Pre-Fabrication and Standardisation in Housing'. RGU was sole academic partner on this £270,000 **EPSRC/DTI** funded project, which included the Council for Mortgage Lenders, General Accident and the Stuart Milne Group as Industrial Collaborators (<http://www.rgu.ac.uk/sss/research/page.cfm?pge=2541>)
- Principal Investigator on project funded by the **Scottish Executive** to develop an assistive technology strategy for the homes of people with disabilities (£110,000 2007-2008). (<http://www.rgu.ac.uk/sss/research/page.cfm?pge=42431>)
- Principal Investigator on Commission from the **Scottish Executive** entitled 'Mapping Survey of the Social Value and Benefits of Good Architectural Design'. £20,000, 2002/2003 (<http://www.rgu.ac.uk/sss/research/page.cfm?pge=19367>)
- Investigator on a **AHRC** funded project entitled "Scoping Study on Wider Social Participation in the Architectural Design Process" in collaboration with Edinburgh College of Art, The Mackintosh School in Glasgow and Heriot Watt University (<http://www.rgu.ac.uk/sss/research/page.cfm?pge=42435>)

efp

 CUSTODIAN

 CRASH



Award-winning affordable rural housing designed and built as a result of a Scottish Homes funded research project led by Martin Edge

- Involved in a grant of £174,000 from the RGU Educational Development Trust for the establishment of the 'Scottish Environmental Design Research Centre' (**Search**) 1996 to 2001. Search formed the focus for the successful development of a wide variety of projects in Environmental Design.
- Manager and Principal Investigator of an Interdisciplinary Research Project on "Affordable Rural Housing" for **Scottish Homes** and Gordon District Council. Research Grants of £160,000 leading to a 14 home demonstration project with a further public grant from Scottish Homes of £450,000. Employing four Research Assistants: 1993 to 1997. Designs produced for and evolved from this project have won a number of National and International awards.
- Investigator on a project for **NHS Estates**, bringing together design and whole life criteria in the study of health and other effects of hospital design, entitled 'Developing an Integrated System for the Optimal Selection Of Hospital Finishes' (£128,000 – 2005-2007) (<http://www.rgu.ac.uk/ss/research/page.cfm?page=33535>)
- Successfully supervised five PhDs to completion and currently supervising three PhD Research Students, two as Director of Studies
- A series of grants for projects entitled 'Sustainable Urban Wastewater Treatment': totalling some £70,000 from SHEFC internal research funds & 'Search'; 1997 to 2000
- £50,000 for Research/Consultancy work designing assistive technology installations for an Aberdeen public sector consortium.
- 'The Zero-Heating House' grants totalling £22,000 from Aberdeen City Council and SHEFC funds for life-cycle costing, post-occupancy analysis and energy monitoring of an award winning home design derived from the 'Affordable Rural Housing' Project.
- Involvement in 'Streetscapes' project, with total funding of £65,000 from SHEFC, Scottish Enterprise etc. 1997 to 2001
- 'Visual Aspects of Masonry Conservation': £25,000; Historic Scotland; 1990
- 'VR in Design Participation': £9,000; RGU Internal Funding; 1994

Publications

Post-2000

Books/Chapters

Edge, H.M. (Ed.) (2001) 'Old World, New Ideas: Environmental and Cultural Change and Tradition in a Shrinking World: Proceedings of EDRA 32'. Environmental Design Research Association (ISBN 0939922-26-6) (Editor of major collection of papers with an international panel of referees)

Edge, M., & Craig, T. (2005). Internet Methodologies in Housing Research. In Methodologies in Housing Research (Eds. Hurol, Y.; Vestbro, D.; Wilkinson, N), Urban International Press, pp. 272 - 285.

Craig, T, Abbott, L, Laing, R, & **Edge, M.** (2005). 'Assessing the Acceptability of Alternative Cladding Materials in Housing: Theoretical and Methodological Challenges'. In Housing, Space and Quality of Life (Eds. Garcia-Mira, R., Uzzell, D., Real, J.E. and Romay, J.), Ashgate (Ethnoscapas Series).

Jenkins, P. Forsyth, W. Sharpe, T and **Edge, M.** (2010) 'Preface' In Jenkins, P. and Forsyth, W. (Eds.) Architecture, Participation and Society. Routledge (ISBN10: 0-415-54723-7)

Forsyth, W. Pereira, M. Townsend, L. and **Edge, M.** (2010) 'Case Studies of Social Participation in Different Building Types' In Jenkins, P. and Forsyth, W. (Eds.) Architecture, Participation and Society. Routledge (ISBN10: 0-415-54723-7)

Dewsbury G, Taylor B & **Edge M** (2001) 'Designing Safe Smart Homes for Vulnerable People', in Proctor R, and Rouncefield M, 2001, Dependability in Healthcare Informatics, Lancaster University, ISBN 1 86220 109 9, pp65-70

Journals

Edge, H.M. and Pearson, R. (2001) 'Vernacular Architectural Form and the Planning Paradox: A Study of Actual and Perceived Rural Building Tradition' Journal of Architecture and Planning Research Vol. 18 No 2 Summer 2001 (ISSN 0738-0895)



RGU's first 'Link' Project; Principal Investigator Martin Edge, investigated resistance to prefabrication in housing



The RICS award winning 'Van Midden House'. Architect G. Deveci; Research Martin Edge. From a design produced for the ARH Project

Scott J, **Edge, M** and Laing, R. "Passive solar design of mass housing: Ensuring environmental improvements at the planning stage for suburban housing" *Journal of Building Appraisal* (2006) **2**, 207–222.
doi:10.1057/palgrave.jba.2950041

Dewsbury, G and **Edge, H.M.** (2001) 'Designing the Home to Meet the Needs of Tomorrow ... Today: Smart Technology, Health and Well-Being.' *Open House International* Vol 26 No 2 2001 Autumn 2001 (ISSN 0168-2601)

Dewsbury, G. Taylor, B & **Edge, M** (2002) 'Designing Dependable Assistive Technology Systems for Vulnerable People' *Health Informatics Journal*, June 2002 Volume 8, Number 2, pp104-110, ISSN 1460-4582.

Dewsbury, G. Clarke, K. Rouncefield, M. Sommerville, I. Taylor, B. and **Edge, M.** (2002) 'Designing acceptable 'smart' home technology to support people in the home' *Technology and Disability* 14 (2002) pp1-9 ISSN: 1055-4181

Invited/Keynote Papers

Edge, M. and Dewsbury, G. (2002) 'Invited Paper: Deconstructing and Rebuilding the Home for Life: Technology to Assist Older People in their Homes' 4th International Aged Care Housing Summit, Melbourne, 6-8 November 2002

Edge, M. Duncan, M. Kinsley, J. and Harvie, C. (2001) 'Keynote: Designing Democracy: The Development of the New Scottish Parliament Project' in 'Old World, New Ideas' Proceedings of EDRA 32' (ISBN 0939922-26-6)

Teymur, N. Sibley, M. Horne, S. Salama, A and **Edge, M.** (2001) 'Plenary: People in Design Education: Emerging Paradigms and Cross-Cultural Visions' in 'Old World, New Ideas' Proceedings of EDRA 32' (ISBN 0939922-26-6)

Edge, M. (2003) "The Impact of Climate Change on Design and Construction" Invited Keynote at CIBSE/Scottish Executive Seminar on Climate Change, Scottish Executive, 15th April 2003

Edge, M. (2003) 'Euro-Villains: Colliding Cultures, New Towns and Manifestos in Southern India' Invited Paper at 'Cross-Cultural Collisions in Cities', Edinburgh University Architecture Seminar Series 2002-2003, May 2003

Refereed Proceedings

Edge, H.M. (2001) 'Planning for Local Economy and Individual Empowerment: Self-Build Housing and the 'New Vernacular' in 'Old World, New Ideas: Environmental and Cultural Change and Tradition in a Shrinking World: Proceedings of EDRA 32' Environmental Design Research Association (ISBN 0939922-26-6) (One of 20 papers chosen from over 400 for full publication)

Milner, J and **Edge, H.M.** (2001) 'Architecture, Education and the Needs of Disabled People: An Exploration of the Contested Discourse of 'Function' in 'Old World, New Ideas: Environmental and Cultural Change and Tradition in a Shrinking World: Proceedings of EDRA 32' Environmental Design Research Association (ISBN 0939922-26-6) (One of 20 papers chosen from over 400 for full publication)

Laing, R. Craig, A. and **Edge, H.M.** (2001) 'Prefabricated Housing: an Assessment of Cost, Value and Quality' *Construction for Tomorrow's City*. Hong Kong. July 2001 (Full paper published in refereed conference proceedings)

On-Line and CD Proceedings

Edge, H.M. and Craig, A. (2002) 'Change and Innovation in Housing Design: Investment Characteristics of New Forms of Owner-Occupied Housing' in 'Housing Cultures, Convergence and Diversity' European Network for Housing Research 2002, Vienna, 1-5 July 2002, Vienna, Austria

Edge, H.M. Scott, J. Deveci, G. and Martin, P. (2001) 'Towards Zero-Heating: Affordable Models for Environmentally Friendly Housing in Scotland' in *Laying Siege to Toytown*: RIAS Conference 2001 (<http://www.asrt.org.uk>)

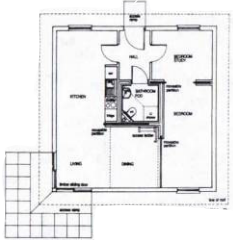
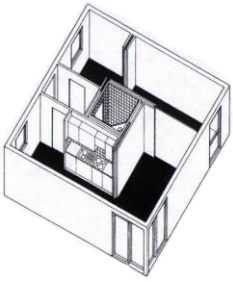
Edge, H.M. and Duncan, P. (2001) 'Planning for Sustainable Local Economies: The 'New Vernacular' and Self-Build Housing' in *Laying Siege to Toytown*: RIAS Conference 2001 (<http://www.asrt.org.uk>)

Conferences

- Kishk, M, Laing, R, Scott, J and Edge, M (2007) "A Generic Finishes Database for Healthcare Facilities". In: Boyd, D (Ed) Procs 23rd Annual ARCOM Conference, 3-5 September 2007, Belfast, UK, Association of Researchers in Construction Management, 883-892
- Kishk, M, Laing, R, Scott, J. and, **Edge, M**, (2007) "A Novel System for the Optimal Selection of Finishes for Healthcare Facilities" The Fourth Salford Centre for Research & Innovation (SCRI) International Symposium
- Kishk, M, Laing, R and, **Edge, M**, (2007) "An Extended Whole-Life Application for the Selection of Hospital Finishes" In: Boyd, D (Ed) Procs 22nd Annual ARCOM Conference, 4-6 September 2006, Birmingham, UK, Association of Researchers in Construction Management, 719-728.
- Kishk, M, Laing, R, **Edge, M**, & Scott, J (2006). "An integrated framework for the optimal selection of hospital finishes - system algorithm and methodology". In the Proceedings of The Joint International Conference on Decision Making in Civil and building Engineering, Montreal, June 14-16, pp. 840-847.
- Laing, R, Kishk, M, Scott, J, & **Edge, M** (2006). "On the selection criteria of hospital finishes". In the Proceedings of The Joint International Conference on Decision Making in Civil and building Engineering, Montreal, June 14-16, pp. 822-829.
- Dewsbury, G, & **Edge, M** (2005). "The 21st Century Home: The changing way in which the home is used and integrated into daily life". In the Proceedings of Building for 21st Century Living: Housing Design to Meet the New Demographics. Tuesday, 22nd November 2005 Glaziers Hall, London SE1, 22nd November.
- Dewsbury G and **Edge M** (2005) 'Design Requirements of the Future Home', Proceedings of Building for 21st Century Living conference, London, November 22nd 2005.
- Edge, M**, Craig, T, & Conniff, A (2004). "Mapping Research on the Social Value of Architecture". In Evaluation in Progress - Strategies for Environmental Research and Implementation (Eds. Martens, B. Keul, A.G.), IAPS, Vienna (ISSN/ISBN: 3-85437-263-9). (url)
- Scott, J, **Edge, M**, Laing, R, & Martin, P (2004). "Optimising the Relationship Between Passive Solar Design of New Housing and the Economics of Construction and Land Value". In the Proceedings of 4th International Postgraduate Conference, April 1st-2nd, pp. 11.
- Scott, J., Deveci, G., **Edge, M.**, & Martin, P. (2004). "Towards Zero Heating: Affordable Models for Environmentally Friendly Housing in Scotland". In the Proceedings of Association of Researchers in Construction Management (ARCOM) Conference 2004, September 1st-3rd, pp. 10.
- Scott, J., Deveci, G., **Edge, M.**, & Martin, P. (2004). "Towards Zero Heating: Affordable Models for Environmentally Friendly Housing in Scotland". In the Proceedings of Construction and Building Research (COBRA) 2004, September 7-8th, pp. 12.
- Scott, J, **Edge, M.**, Laing, R., & Martin, P. (2004). "Optimising the Relationship Between Passive Solar Design of New Housing and the Economics of Construction and Land Value". In the Proceedings of Association of Researchers in Construction Management (ARCOM) 2004, September 1st-3rd, pp. 11.
- Abbott, L, **Edge, H.M.** and Conniff, A. (2003) "Housing Modification and Implications for Future Housing Provision: a Socio-Psychological Investigation" in ENHR/IAPS Conference "Methodologies in Housing Research" Stockholm, Sweden 22-24 September 2003
- Craig, A and **Edge, H.M.** (2003) 'Internet – Based Methodologies in Housing Research: An Iterative Study Using Quantitative, Financial Measures to Gauge Housing Choices' in ENHR/IAPS Conference "Methodologies in Housing Research" Stockholm, Sweden 22-24 September 2003
- Scott, J, **Edge, H.M.** Laing, R and Martin, P. (2003) 'Optimising the Relationship Between Passive Solar Design of New Housing and the Economics of Construction and Land Value' The First Scottish Conference for Postgraduate Researchers of the Built &

Computer simulations of radical house design developed for a DTI/ EPSRC 'Link' Project





Flexible designs built as a result of the 'Affordable Rural Housing Project' and winner of a '2000Homes design award'

Natural Environment (PRoBE) Glasgow Caledonian University, Scotland, 18 – 19 November 2003.

- Edge**, H.M. and Craig, A. (2002) *'The Home as Environment and Investment – International Pressures for Change in the Design of Local, Domestic Built Environments'* in Garcia-Mira, R. and Sabucedo, J.M. (Eds) 'Culture, Quality of Life and Globalisation; Problems and Challenges for the New Millennium' Proceedings of 17th Conference of IAPS, A Coruna, Spain, 23-27 July 2002.
- Edge**, H.M. (2002) *'Fitting Local Traditions and Cultures into New International Housing Solutions'* in Garcia-Mira, R. and Sabucedo, J.M. (Eds) 'Culture, Quality of Life and Globalisation; Problems and Challenges for the New Millennium' Proceedings of 17th Conference of IAPS, A Coruna, Spain, 23-27 July 2002.
- Craig, A. Abbott, L. Laing, R. and **Edge**, M. (2002) *'Assessing the Acceptability of Alternative Cladding Materials in Housing: Theoretical and Methodological Challenges'* in Garcia-Mira, R. and Sabucedo, J.M. (Eds) 'Culture, Quality of Life and Globalisation; Problems and Challenges for the New Millennium' Proceedings of 17th Conference of IAPS, A Coruna, Spain, 23-27 July 2002.
- Milner, J. and **Edge**, H.M. (2002) *'Lifeworld and System – Architecture and Disability: A Habermasian Analysis of Architectural Education.'* in Design Research Society International Conference, Brunel Unievrsty 2-5 September 2002
- Whyte, A. Lee, S. **Edge**, M. and Pollock, R. (2001) *'Buildability: The Role Of Professional Institutions And Universities'* in 'Old World, New Ideas: Environmental and Cultural Change and Tradition in a Shrinking World: Proceedings of EDRA 32' Environmental Design Research Association (ISBN 0939922-26-6)
- Edge**, H.M. (2001) *'Affordable Models For Environmentally Friendly Housing In Scotland: The Cultural Acceptability Of Radical New Approaches To Housing'* in 'Old World, New Ideas: Environmental and Cultural Change and Tradition in a Shrinking World: Proceedings of EDRA 32' EDRA (ISBN 0939922-26-6)
- Dewsbury, Taylor, B. and **Edge**, H.M. (2001) *The Process of Designing Appropriate Smart Homes: Including the user in the design* "EQUATOR Workshop on Ubiquitous Computing in Domestic Environments" Nottingham University 13-14th September 2001
- Edge**, H.M. (2001) *'Researching Design: Experiences with Projects in Sustainable, Affordable Housing'* Symposium on Housing Design from User Needs: Edra 32, July 3rd to 6th 2001, Edinburgh (ISBN 0939922-26-6)
- Dewsbury, G. Taylor, B. and **Edge**, H.M. (2001) *'Designing safe smart home systems for vulnerable people'* Workshop on Dependability in Healthcare Informatics. Edinburgh 22nd-23rd March 2001

Research Reports

- Edge**, M. et al (2002) *'Overcoming Client and Market Resistance to Pre-Fabrication and Standardisation in Housing'* Final Report on DTI/EPSRC 'Link' Project in IMI Programme (MCNS 04/09) October 2002. 427pp
- Edge**, H.M. et al (2003) *'Housing the Future: Key Opportunities and Constraints in New Housing Innovation'* Report on a study for DTI/EPSRC. In press
- Edge**, H.M. et al (2003) *'Mapping Survey of Non-Technical Research on the Social Value and Benefits of Good Architectural Design'* Final Research Report to Scottish Executive Architecture Policy Unit
- Edge**, M. and Craig, A. (2004) *'Measuring the Impact of Well-Designed Higher Education Buildings – Report on a Research Commission for CABE'* Commission for Architecture and Built Environment
- Edge**, M, Dewsbury G and Taylor, B. (2001) *The Final Report of the CUSTODIAN Project*, EC TIDE DE4004.

Articles

- Edge**, H.M. (2001) *'EDRA32/2001 Conference Summary'* Design Research News Volume XXXII Number 3 2001, EDRA (ISBN 0-939922-07-X)
- Edge**, H.M. et al (2001) *'Research at the Scottish Centre for Environmental Design Research'* Bulletin of the International Assoc. of People-Environment Studies

Publications

Up to 2000

Dewsbury, G. Taylor, B & **Edge**, M. (2001), *'Designing Reliable Smart Home Technology for Disabled People'* HomeToys Home Automation and Home Networking EMagazine, Volume 6 Issue 6, Dec 2001 / Jan 2002

Edge, H.M. and Milner, J.S. (1998) *'Universal Design; a Social Agenda Within the Ecologically Designed Built Environment'* in 'Shifting Balances; Changing Roles in Policy, Research and Design'. Proceedings of the 15th Biennial Conference of IAPS, Eindhoven, The Netherlands, 14-17 July 1998. (Full paper selected amongst twenty for refereed proceedings)

Edge, H.M. (1992) *"Rural Housing, Recognising Design Needs"* Building Research and Information, Volume 20 No. 5.

Whyte, A. **Edge**, H.M. and AlHajj, A. (2000) *'The Success of Software Support in Engineering: An Emphasis on Product Rather Than Process'* ACTA Polytechnica: The Journal of Advanced Engineering

Edge, H.M. (2000) *'The Potential for 'Smart Home' Systems in Meeting the Care Needs of Older Persons and People with Disabilities'* Seniors' Housing Update. Gerontology Research Centre, Simon Fraser University, Vancouver, Canada.

Craig, A. Laing, R. and **Edge**, H.M. (2000) *'The social acceptability of prefabrication and standardisation in relation to new housing.'* 16th IAPS Conference "21st century: Cities, social life and sustainable development", Paris, 4th-7th July 2000

Dewsbury, G and **Edge**, H.M. (2000) *'Designing the Home to Meet the Needs of Tomorrow ... Today: Deconstructing and rebuilding the home for life.'* European Network for Housing Research Biennial Conference, Gävle, 26th-30th June 2000

Edge, H.M. (1998) *'From the Special to the Universal in Design for People with Dementia; Housing Design and Culture in Rural Scotland'* Symposium on: 'Environments for People with Dementia; A Cross-Cultural Perspective on Research and Applications IAPS Conference, Eindhoven July 1998:

Ferreira, J.M. Amaral, T. Santos, D. Agiannidis, A and **Edge**, H.M. (2000) *'The CUSTODIAN Tool: Simple Design of Home Automation Systems for People with Special Needs'* EIB Event 2000, October 4th and 5th 2000, Technische Uni. Munchen

Whyte, A and **Edge**, H.M. (1999) *Inter-Disciplinary Professional Education: Addressing the Uncertainties of Worth and Structure* International Conference in Engineering Education 'ICEE'99' Ostrava, Czech Republic (Published on CD) 1562-3580

Whyte, A. **Edge**, H.M. and AlHajj, A. (1999) *'Professional Interaction and Participation: The Role of Culture and Attitude* COBRA 1999: RICS Construction and Building Research Conference: The Challenge of Change: Construction and Building for the New Millennium. Baldry D and Ruddock L Eds. Vol1 pp131-141 0854069682

Whyte, A. and **Edge**, H.M. (1999) *'Addressing Discord in the Team: Beyond Third Party Management'* ARCON '99 Conference, Liverpool John Moore's University V1 pp143-152 0953416127

Dewsbury G and **Edge** M (2000) *"Designing the Home to Meet the Needs of Tomorrow ... Today: Deconstructing and rebuilding the home for life"*, Paper Presented at the ENHR 2000 Conference in Gävle 26-30 June 2000.

Edge, H.M. and Deveci, G. (2000) *'Workshop on Sustainability, Off Site Fabrication and Standardisation'* Rethinking Scottish Housing: Housing Forum and the Scottish Executive, May 2000

Edge, H.M (1999) *'The Potential for the Use of 'Smart Home' Systems in Meeting the Care Needs of People with Disabilities: Strategic Issues and Opportunities'* A Presentation to the Dundee and Tayside Workshop on the Use of Smart Home Technology. Perth 03/12/1999

Edge, H.M. (1998) *'From Institution to Community in Public Policy on Care: Removing Design Barriers through Involvement and Flexibility'* EDRA 29, St. Louis, 1998 'People, Places and Public Policy'

Edge, H.M. (1998) *'Generating Designs Through Research: The Science and Architecture of Housing'* EDRA 29/1998 'People, Places and Public Policy' St. Louis, Missouri, USA, March 4-8 1998

Edge, H.M. Deveci, G. and Slaven, G.A. (1998) *'The Adaptive House in Rural Social Housing Policy; Removing Barriers Through Design Participation and Flexibility'* European Network for Housing Research Conference, Cardiff, 7-11/9/1998



Images developed in collaboration with the Stewart Milne Group for web-based surveys on a 'Link' Project



- Edge**, H.M. and Duncan, P. (1998) 'Motivations in the Self-Provision of Social Housing; The Political Economy of Self-Build' European Network for Housing Research Conference, Cardiff, 7-11/9/1998
- Edge**, H.M. Cooper, M. and Slaven, G.A. (1998) 'Home Networks in Welfare and Care Services; A Report on the Establishment of a Major Research Programme' IAPS Conference; Eindhoven, July 1998; Symposium on Environments for People With Dementia; A Cross-Cultural Perspective on Research and Applications
- Edge**, H.M. and Martin, P. (1997) 'Ecological Design in the Education of Professionals; A Model for Overcoming Cultural Barriers' Environmental Training in Engineering Education, ENTREE '97, Advanced Learning for Energy and the Environment. November 12-14 1997, Sophia-Antipolis (Nice), France.
- Edge**, H.M. and Milner, J. (1997) "Social Issues and Universal Design Within an Ecological Agenda For Architecture" Space Design and Management for Place Making. EDRA 28, 1997. Montreal.
- Edge**, H.M. (1998) 'Ecological Design, Self-Build Technology and the Emergence of an 'International Vernacular' Seventh International Symposium on Society and Resource Management: Culture, Environment and Society. Missouri May 27-31.
- Edge**, H.M. and Slaven, G.A. (1997) 'Housing Design for the Independence of the Rural Elderly in the Context of Care in the Community' British Society of Gerontology Annual Conference, 19-21/9/1997, 'Elder Power in the 21st Century'.
- Edge**, H.M. Deveci, G. Slaven, G.A. and Baxter, S.H. (1997) 'Spatial Flexibility in Social Housing: Choice and Management in the Adaptive House' EDRA 28/1997, Space Design and Management for Place Making, Montreal, May 1997.
- Edge**, H.M. Slaven, G.A. and Baxter, S.H. (1997) 'Green Spaces, Buffer Zones and Affordability for Rural Housing' EDRA 28/1997, Space Design and Management for Place Making, Montreal, May 1997.
- Milner, J.S. and **Edge**, H.M. (1997) 'Architecture and the People who Occupy Architectural Spaces: Towards a Common Language; The Babelish Solution' Conference on Discourse and Urban Change; Foregrounding Language in Housing and Urban Research', Glasgow, 2-3 June 1997
- Edge**, H.M. and Baxter, S.H. (1995) "Environmental Engineering in the Context of Ecological Design", ENTREE '95; Strengthening Synergy Between Environmental Research and Education, UETP-EEE, Ispra, Italy, 16-19 October 1995.
- Whyte, A. and **Edge**, H.M. (1995) "Education as the Key to Addressing Conflict Within the Building Design Team" CIB TG15 Conference, 'Construction Conflict, Management and Resolution'. 9-14 October 1995.
- Whyte, A. and **Edge**, H.M. (1994) "Design Team Integration: An Assessment of Educational Initiatives" In Fenn, P. (Ed) 'Construction Conflict, Management and Resolution: Proceedings of the Meeting Held in Lexington, USA, 16-19 October 1994. (TG15) CIB Proceedings, Publication No. 171
- Edge**, H.M. et al (1997) 'Participation and the Adaptive House' Environmental Design Research Association Conference 28, Montreal, June 1997
- Edge**, H.M. (1992) "Rebuilding the Tower of Babel; Communication and the Shaping of the Built Environment, the Need for Interdisciplinary Research". Construction Beyond 2000; CIB W84 Conference, Helsinki, June 1992.
- Parks, C.A. **Edge**, H.M., Baxter, S.H. and Pollock, R.W. (1992) "Complex Buildings and Building Function; A Conceptual Approach to the Building Design and Operational Planning Processes in Hospital Foodservices" , Construction Beyond 2000; CIB W84 Conference, Helsinki, June 1992.
- Whyte, A. Lee, S. **Edge**, H.M. and Pollock, R. (1999) 'Buildability: The Role of Professional Institutions and Universities' COBRA 1999
- Edge**, H.M. (1990) "Understanding the Effects of Wind Power in the Rural Environment: The Contribution of the Social Sciences". The Wind Power Credibility Gap, Fact or Fiction? BWEA Workshop, Energy Studies Unit, Uni. of Strathclyde, 15 Feb. 1990.
- Edge**, H.M. and Saluja, G.S. (1989) "Appropriate Technology for the Domestic Sector; Case Studies in Rural Scotland" Science and Technology at the Service of Architecture. 2nd European Conference on Architecture. UNESCO, Paris, 4-8 December 1989.



The 'Zero-Heating' House: A derivative of designs for the Affordable Rural Housing Project. Research Manager Martin Edge

Research Reports



Martin Edge Chaired the largest event in Environmental Design in the world in 2001

- Edge, H.M.** (1989) *"Environmental Ideology and its Effect on the Public Perception of Wind Energy Conversion"* European Wind Energy Conf. Madrid, 10-14 Sept. 1989.
- Edge, H.M.** (1987) *"Achieving Local Autonomy in Rural Energy Resources and Use"* PhD Thesis, CNAA.
- Edge, H.M.** (1995) *"The Affordable Rural Housing Research and Development Project"* Scottish Homes Research and Innovation Services 'Précis'.
- Edge, H.M.** (1995) *"Affordable Rural Housing: The Lumsden Project"* Gordon District Council and Scottish Homes Report, 64pp.
- Edge, H.M. et al** (1994) *"Affordable Rural Housing Innovation Report"* Scottish Homes Innovation Report, 270pp.
- Edge, H.M. and Shucksmith, M.** (1988) *"Context Study: Upland Grampian"* Report for the European Community Farm Household Pluriactivity Study.
- Edge, H.M. and Baxter, S.H.** (1987) *"Energy in Rural Areas"* Royal Institution of Chartered Surveyors.
- Dewsbury G, **Edge, M.** and Taylor B, (2000) *Interim Report on Development of Tools, User Needs Assessment*, TIDE Edge DE4004, D7.2b.
- Dewsbury G, Bonner S, Linskell J, Anderson S, Taylor B, **Edge M** and Ferreira JM, (2000) *Final Evaluation of Tool Developed in project*, TIDE DE4004, D7.3.
- Dewsbury G, **Edge M** and Taylor B, (2000) *The Evaluation and Validation of the CUSTODIAN Software Suite*, TIDE DE4004, D4.1b.
- Edge, M, Taylor B, Dewsbury G and Groves M** (2000) *'The Potential For 'Smart Home' Systems In Meeting The Care Needs Of Older People With Disabilities*, Seniors' Housing Update, Gerontology Research Center, Canada, Vol10, Number 1, August 2000, pp6-7, ISSN: 118-1828.
- Taylor B, Dewsbury G, and **Edge M** (2000) *Structured Knowledge Bases for incorporating in the tools*, TIDE DE4004, D6.2a.
- Taylor B, Dewsbury G, **Edge M**, and Bonner S (2000) *Evaluation of Consultation Processes*, TIDE DE4004, D7.1a.
- (In Addition, upwards of 50 unpublished reports, papers and other deliverables for CUSTODIAN, OCRiSH and other major research commissions)*

Academic Management

- Course Leader:** MSc/PgDip in Ecological Design; 1993-95
- Course Leader:** HNDs in Architectural Technology, Building/Quantity Surveying and Construction Management; 1993-95
- Course Leader:** HNCs in Architectural Technology, Quantity Surveying Construction Management and Civil Engineering; 1993-95
- Joint Course Leader:** BSc/BSc Honours in Marine Resource Management (Aberdeen University); 1992-95
- Year Tutor: Stage 3 BSc Quantity Surveying; 1989-93
- Departmental development of 'Access' and SCOTVEC courses, 1991 to 1995.

Course Development

- Responsible for: Redevelopment and validation of MSc/PgDip in Ecological Design
Production and validation of new Part-Time MSc Ecological Design
Complete redevelopment of five SCOTVEC HND Courses
Validation of suite of over 100 'SCOTVEC' Units
- Involvement In: MSc Heritage Management
BSc Marine Resource Management
BSc Honours Quantity Surveying
BSc Honours Building Surveying

Committee Membership

- Between 1989 and present, variously member of: University Research Committee, Research Degrees Committee, Ethics Committee, Faculty of Design Board. Faculty of Design and Technology Research Group. Various Course Panels. Research Methods Development Group. Member of Faculty Advisory Committee for several Undergraduate and Postgraduate Degrees.
- Director of 'S.C.A.R.F.', Aberdeen's home energy charity, from 1992 to 1995

Teaching Experience



Research Methods

MSc/PgDip Ecological Design; *Research Methods*
BSc/BSc Honours Building Surveying/Quantity Surveying Year 3; *Research Methods*
MSc/PgDip Advanced Architectural Studies; *Research Methods*
BSc Architecture Year 3: *Research Methods*
MSc/PgDip Heritage Management; *Research Methods*
BSc Marine Resource Management (Aberdeen University); *Research Methods*
University-wide Research Methods training for Research Students

Environment and Energy

BSc/BSc Honours Building Surveying/Quantity Surveying Year 3; *Energy Management*
MSc Rural and Regional Resources Planning (Aberdeen University); *Energy and Development*
MSc/PgDip Ecological Design; *Energy and Environment*
BSc/BSc Honours Marine Resource Management (Aberdeen University); *Renewable Energy Studies*
Various BSc and HNC courses; *Environmental Impact Assessment*

Dissertation Supervision

BSc Architecture, Surveying, Construction Design and Management and Architectural Technology Dissertation Module Coordinator.
BSc/BSc Honours Building Surveying/Quantity Surveying Year 4; Responsibility for all Major Projects (Dissertations)
BSc Marine Resource Management (Aberdeen University); Responsibility for Final Year Projects
MSc Ecological Design; Responsibility for all Dissertations
MSc Rural and Regional Resources Planning (Aberdeen Uni.); Dissertation Supervision
Undergraduate dissertations in BSc Architecture, Architectural Technology, Quantity Surveying, Building Surveying

Design

Design Philosophy 4; Social Studies Programme, BSc Architecture
BSc Honours Building Design Engineering (Strathclyde University) Year 2; *Architectural Design Projects*
BSc Honours Architecture/Building Surveying/Quantity Surveying Year 3; *Integrated Design Projects*

Value and Cost

MSc/PgDip Ecological Design; *Enterprise and Innovation*
BSc/BSc Honours Building/Quantity Surveying Year 3; *Cost and Investment Studies*
BSc/BSc Honours Building Surveying/Quantity Surveying Year 2; *Property Valuation*
BSc Honours Building Surveying/Quantity Surveying Year 4; *Value Management*
HNC Architectural Technology; *Construction Economics*

Other

BSc Honours Building Surveying/Quantity Surveying Year 4; *Integrative Studies*
BSc/BSc Honours Building Surveying/Quantity Surveying Year 3; *Integrative Studies*
HND/BSc/BSc Honours BS/QS/Construction Management/Architectural Technology Year 1; *Communication*

Personal



Having previously explored large parts of every continent but Antarctica by the slowest possible public transport, I have recently taken to exploring – and writing about – many out-of-the-way corners at an even slower pace. My 27ft sailing yacht Zophiel has recently taken me, at four or five knots on, amongst other things:

- A solo circuit of almost all of mainland Scotland in 2006.
- A mostly solo North Sea circuit in 2007, visiting nine countries.
- A trip to the north of the Lofoten Islands in the Norwegian Arctic, at 68°30'N in 2008, again mostly solo.
- In 2008 three of us also sailed across the Atlantic in a friend's boat.

